

12510 118

3

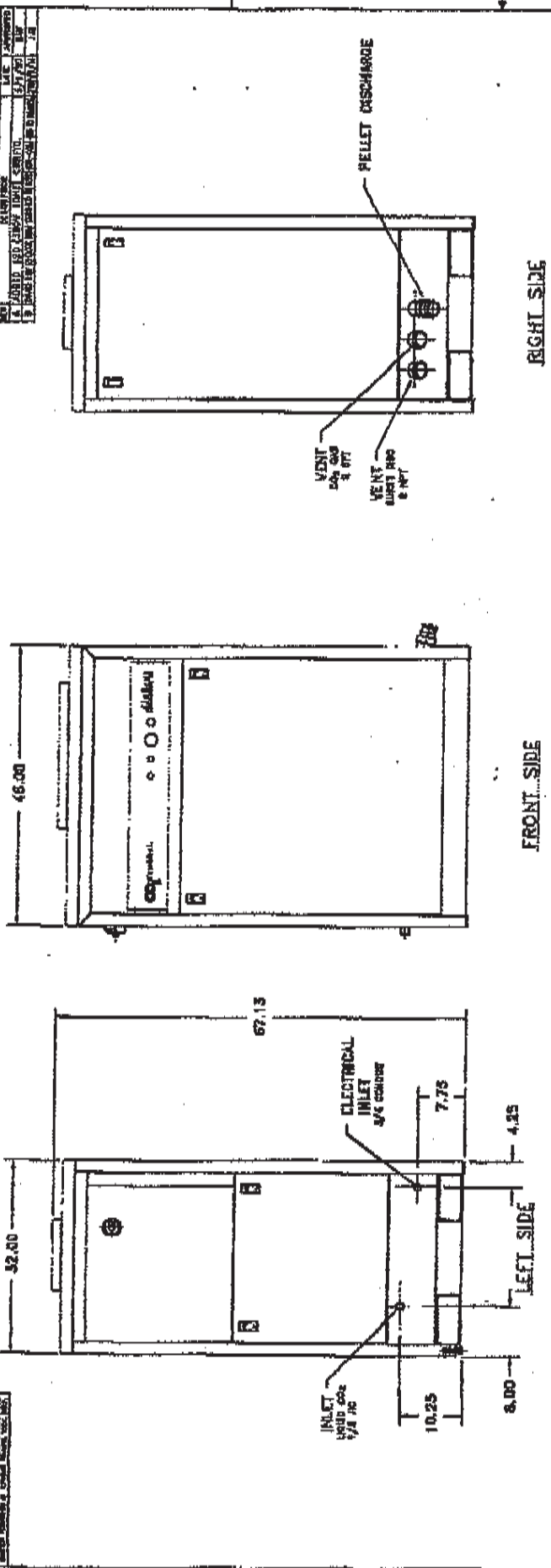
4

5

6

7

B



RIGHT SIDE

FRONT SIDE

LEFT SIDE

PART NO.		DESCRIPTION	QTY	UNIT
1372-000	1	FRONT PANELING	1	EA
1373-000	1	ELECTRICAL ENCLOSURE	1	EA
1374-000	1	INTEGRATED PELLETIZER	1	EA
1375-000	1	INTEGRATED PELLETIZER	1	EA
1376-000	1	INTEGRATED PELLETIZER	1	EA
1377-000	1	INTEGRATED PELLETIZER	1	EA
1378-000	1	INTEGRATED PELLETIZER	1	EA
1379-000	1	INTEGRATED PELLETIZER	1	EA
1380-000	1	INTEGRATED PELLETIZER	1	EA
1381-000	1	INTEGRATED PELLETIZER	1	EA
1382-000	1	INTEGRATED PELLETIZER	1	EA
1383-000	1	INTEGRATED PELLETIZER	1	EA
1384-000	1	INTEGRATED PELLETIZER	1	EA
1385-000	1	INTEGRATED PELLETIZER	1	EA
1386-000	1	INTEGRATED PELLETIZER	1	EA
1387-000	1	INTEGRATED PELLETIZER	1	EA
1388-000	1	INTEGRATED PELLETIZER	1	EA
1389-000	1	INTEGRATED PELLETIZER	1	EA
1390-000	1	INTEGRATED PELLETIZER	1	EA
1391-000	1	INTEGRATED PELLETIZER	1	EA
1392-000	1	INTEGRATED PELLETIZER	1	EA
1393-000	1	INTEGRATED PELLETIZER	1	EA
1394-000	1	INTEGRATED PELLETIZER	1	EA
1395-000	1	INTEGRATED PELLETIZER	1	EA
1396-000	1	INTEGRATED PELLETIZER	1	EA
1397-000	1	INTEGRATED PELLETIZER	1	EA
1398-000	1	INTEGRATED PELLETIZER	1	EA
1399-000	1	INTEGRATED PELLETIZER	1	EA
1400-000	1	INTEGRATED PELLETIZER	1	EA

ANCHOR BOLT PATTERN (1/2 IN. OR 12 MM)

SPECIFICATIONS

- ELECTRICAL POWER — 20 H.P., 200V, 3P, 60 Hz
- 20 H.P., 480V, 3P, 60 Hz
- 20 H.P., 200V, 3P, 50 Hz
- 20 H.P., 380V, 3P, 50 Hz
- CO₂ CONSUMPTION — 600 LBS/HR, 10 H.P.
- 1200 LBS/HR, 20 H.P.
- WEIGHT — 1,410 LBS.

MINIMAL ELECTRICAL SERVICE DISCONNECT

- 80 AMPS
- 50 AMPS
- 60 AMPS
- 30 AMPS

Alpha UNIVERSAL PELLETIZER

INSTALLATION DRAWING
 320 PELLETIZER

12510 118

B

7

6

5

4

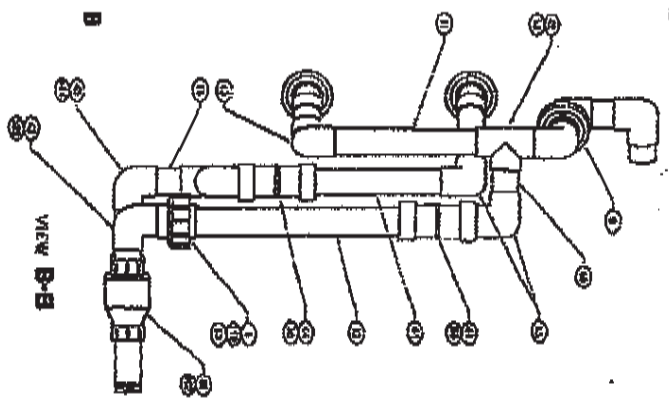
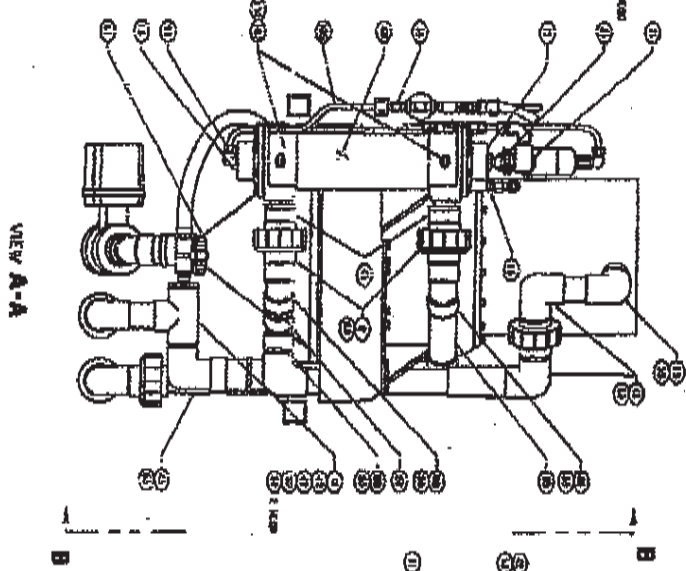
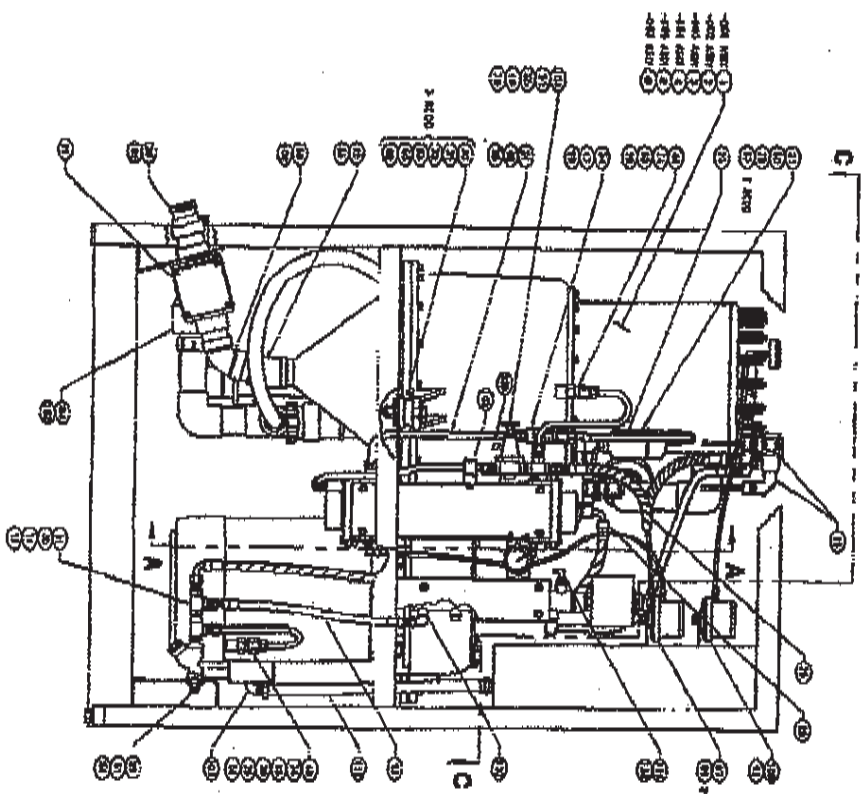
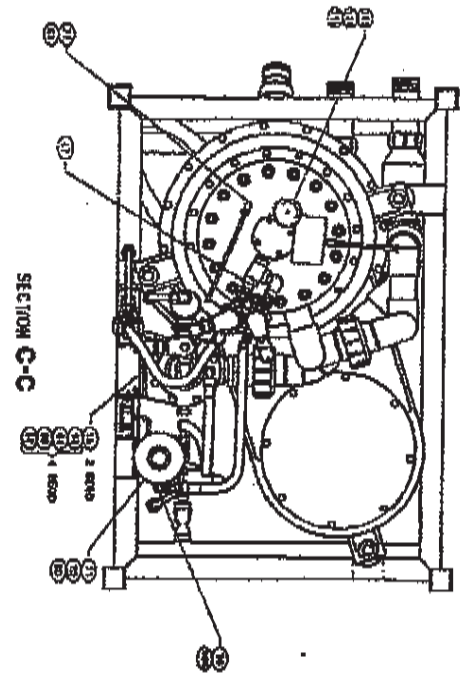
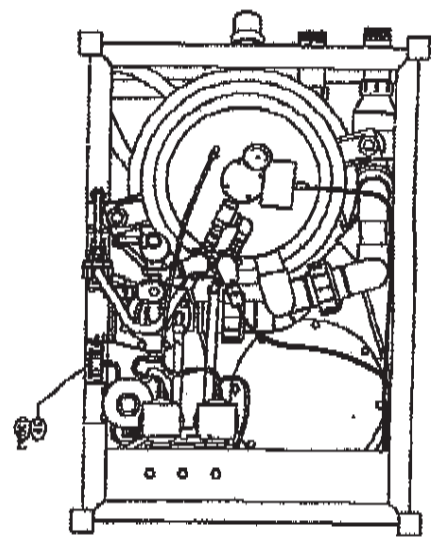
3

2

1

A

11
1. THE DRAWING IS THE PROPERTY OF THE U.S. GOVERNMENT AND IS NOT TO BE REPRODUCED IN ANY MANNER WITHOUT THE WRITTEN PERMISSION OF THE U.S. GOVERNMENT.

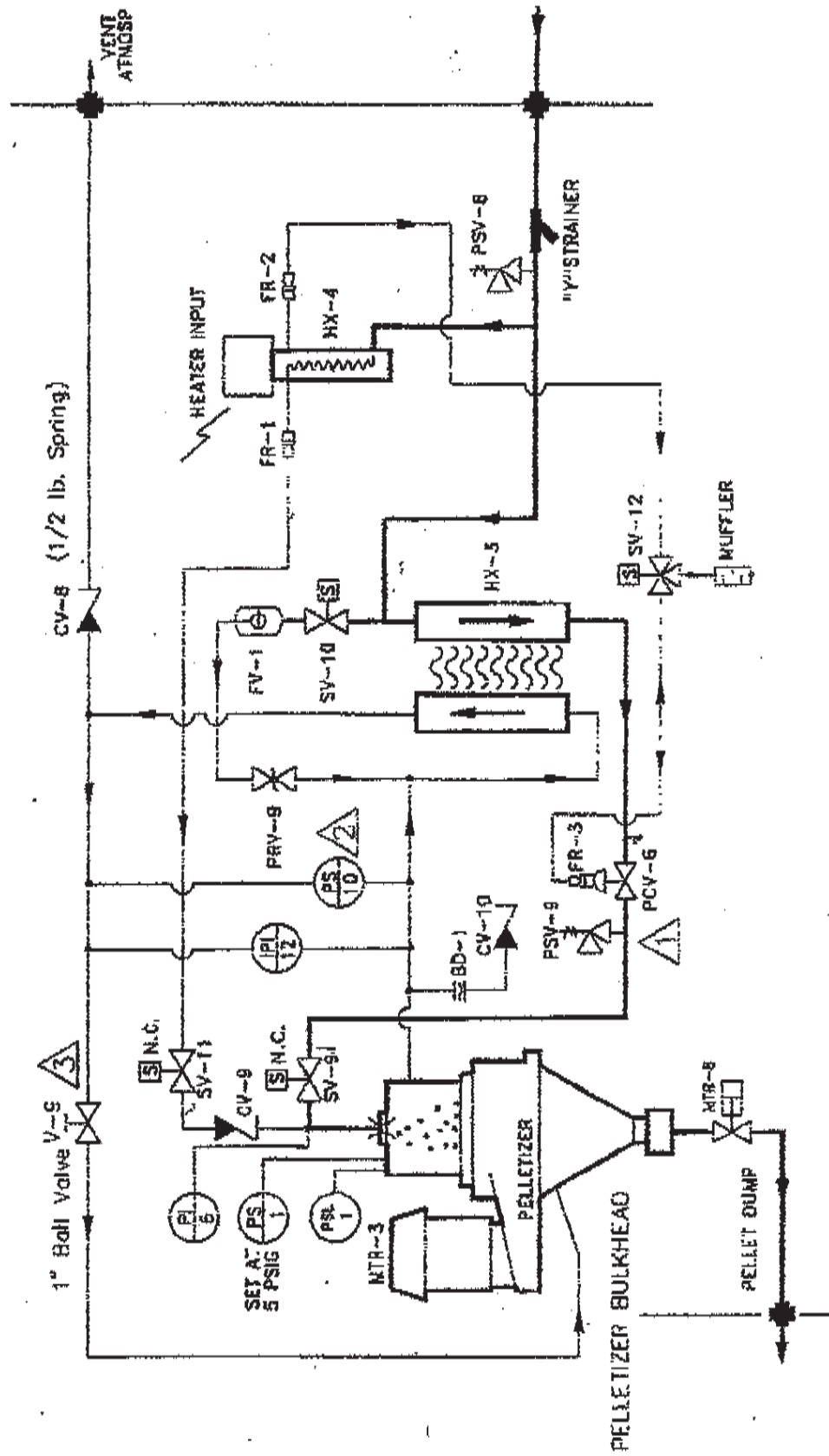


12299 B

12299 B

NOTES:

- ⚠ Set bias to 150 with screw adjuster.
- ⚠ Set PS-10 to approx. (FOR 310)-25" W.C. to achieve make rate of approx. 5lb/min. (FOR 320)-50" W.C. to achieve make rate of approx. 10lb/min.
- ⚠ Adjust to achieve proper pressure as required for delivery hose.



- H CORRECTED BD-1 CONNECTION
- I DIMENSION CHANGES
- J ADDED HOSES FOR 320

REV	DATE	BY	DESCRIPTION
1			
2			
3			

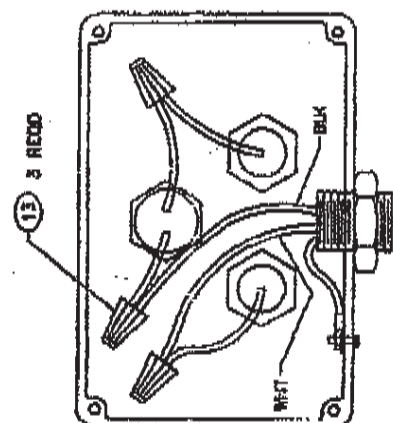
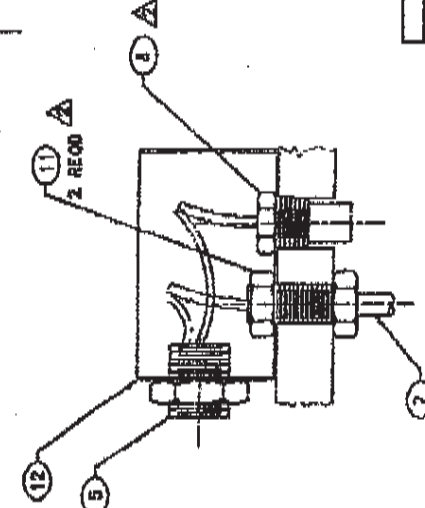
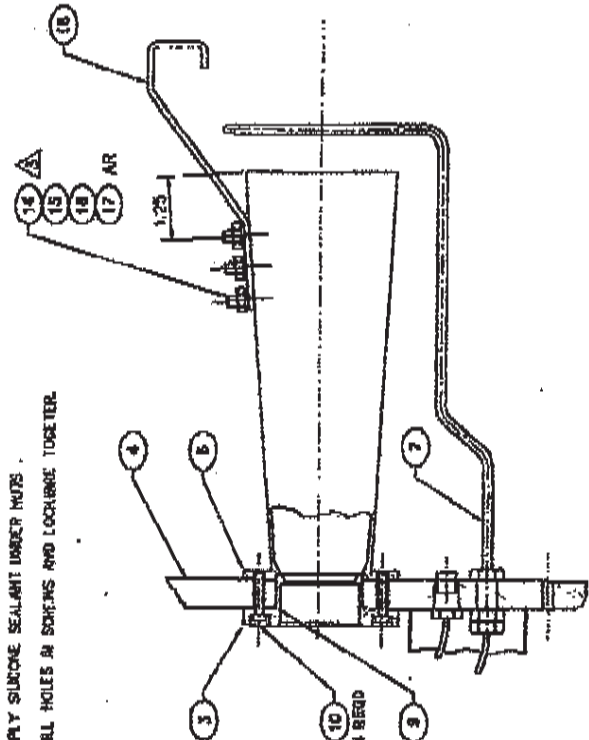
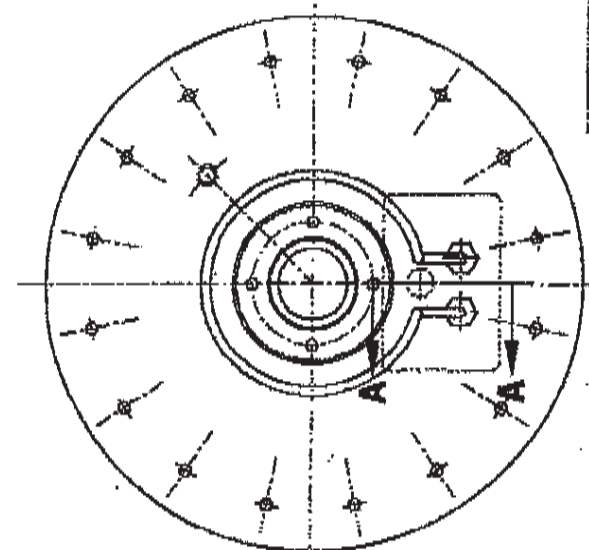
737 4000	CONTINUED ON	PARTS LIST
DESIGN APPROVED BY	DESIGNED BY	DATE
CHECKED BY	DATE	
APPROVED BY	DATE	
PROJECT	NO.	
REVISED	BY	
DATE		
BY		
DATE		
BY		
DATE		
BY		
DATE		

12503

REV	DESCRIPTION	DATE	BY
A	AMHS BUREAU ORDER 118-002	2-17-58	SNF
B	APPROVED FOR DRAWING PER AMHS 114.5	3/7/58	C.D.
C	AMHS BUREAU ORDER 118-002	3-13-58	SNF
D	ADDED NOTE 3, CHANGED ITEM 1A	5-14-58	SNF

NOTES:

- 1. UNLESS OTHERWISE SPECIFIED, INTERPRET DRAWING PER AMHS 114.5.
- 2. APPLY SILICONE SEALANT UNDER NUTS.
- 3. DRILL HOLES IN SOLEMS AND LOCKWIRE TOGETHER.



REV	DESCRIPTION	DATE	BY
1	11844-001 BREAKER		
2	80116-003 LOCKWIRE		
3	30038-004 NUT-FLAT		
4	30053-008 WASHER-SPRIT LOCK		
5	80026-006 SCREW-RO. 1/4"		
6	80182-002 WIRE-NUT		
7	11268-002 BUSH-WIRING		
8	80261-008 NUT-HEX. 3/4"		
9	80003-010 SCREW-RO. 1/4"		
10	700263279 O-RING		
11	70174-008 SPRING-ILM*		
12	70048-005 HEAD-TO ELEMENT		
13	11010-012 WORN ASSEMBLY		
14	10289-003 REPAIR KIT, 3 PWT		
15	11007-062 HOLDER-ROD		
16	11006-001 SNOW HORN ASSEMBLY		
17	-002 SNOW HORN ASSEMBLY		
18	-001 SNOW HORN ASSEMBLY		

REV	DESCRIPTION	DATE	BY
1	12228	1200	
2	12502	1234	
3	12503	1250	

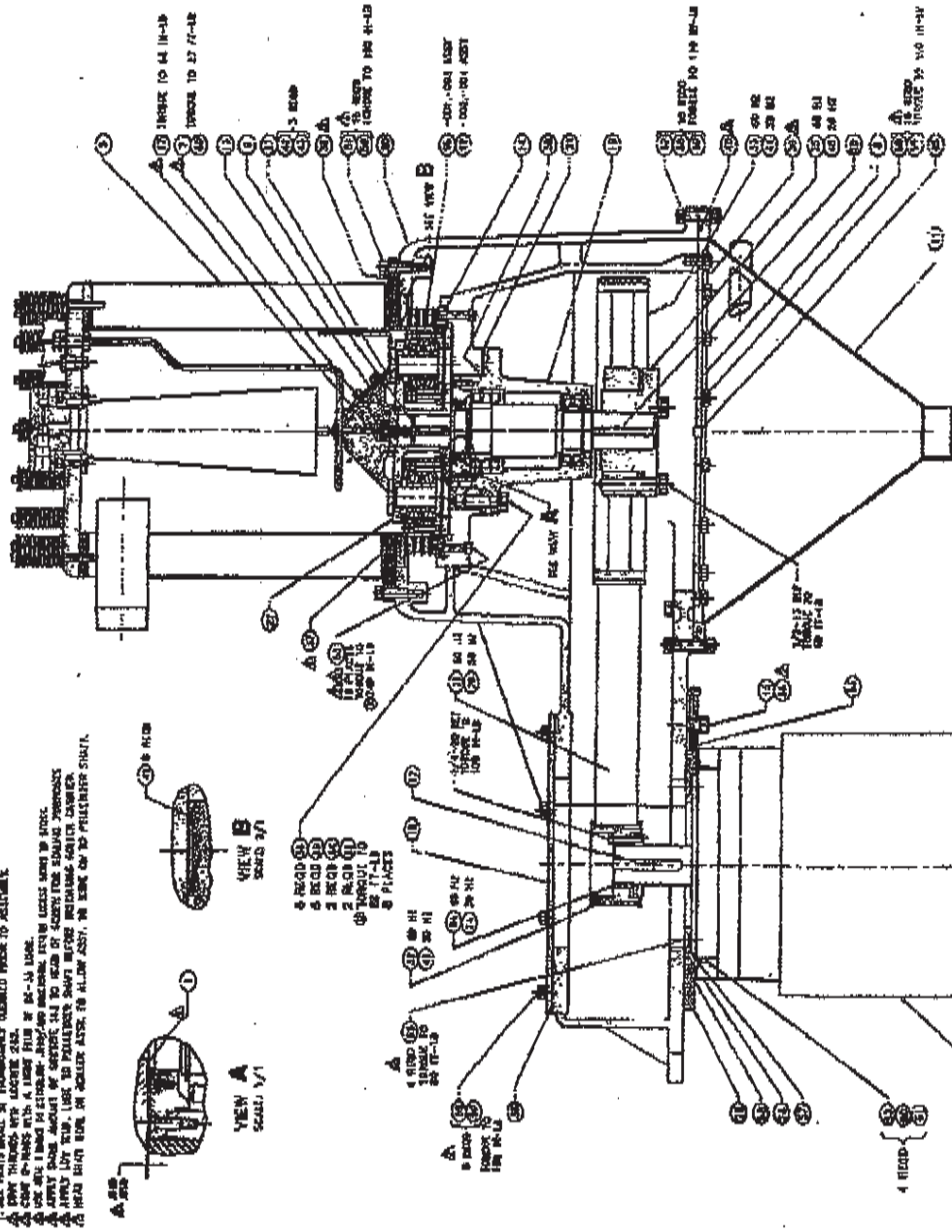
12503

SNOW HORN ASSEMBLY

SECTION A-A

WIRING EXAMPLE

NOTES: (SEE DRAWING SHEET)
 1. ALL DIMENSIONS UNLESS OTHERWISE SPECIFIED ARE IN INCHES.
 2. ALL DIMENSIONS UNLESS OTHERWISE SPECIFIED ARE TO BE TAKEN FROM THE FACE UNLESS OTHERWISE SPECIFIED.
 3. ALL DIMENSIONS UNLESS OTHERWISE SPECIFIED ARE TO BE TAKEN FROM THE CENTER UNLESS OTHERWISE SPECIFIED.
 4. ALL DIMENSIONS UNLESS OTHERWISE SPECIFIED ARE TO BE TAKEN FROM THE CENTER UNLESS OTHERWISE SPECIFIED.
 5. ALL DIMENSIONS UNLESS OTHERWISE SPECIFIED ARE TO BE TAKEN FROM THE CENTER UNLESS OTHERWISE SPECIFIED.
 6. ALL DIMENSIONS UNLESS OTHERWISE SPECIFIED ARE TO BE TAKEN FROM THE CENTER UNLESS OTHERWISE SPECIFIED.
 7. ALL DIMENSIONS UNLESS OTHERWISE SPECIFIED ARE TO BE TAKEN FROM THE CENTER UNLESS OTHERWISE SPECIFIED.
 8. ALL DIMENSIONS UNLESS OTHERWISE SPECIFIED ARE TO BE TAKEN FROM THE CENTER UNLESS OTHERWISE SPECIFIED.



QTY	DESCRIPTION	REF. NO.	UNIT
1	1/2" DIA. HOLE	1	PC
1	1/2" DIA. HOLE	2	PC
1	1/2" DIA. HOLE	3	PC
1	1/2" DIA. HOLE	4	PC
1	1/2" DIA. HOLE	5	PC
1	1/2" DIA. HOLE	6	PC
1	1/2" DIA. HOLE	7	PC
1	1/2" DIA. HOLE	8	PC
1	1/2" DIA. HOLE	9	PC
1	1/2" DIA. HOLE	10	PC
1	1/2" DIA. HOLE	11	PC
1	1/2" DIA. HOLE	12	PC
1	1/2" DIA. HOLE	13	PC
1	1/2" DIA. HOLE	14	PC
1	1/2" DIA. HOLE	15	PC
1	1/2" DIA. HOLE	16	PC
1	1/2" DIA. HOLE	17	PC
1	1/2" DIA. HOLE	18	PC
1	1/2" DIA. HOLE	19	PC
1	1/2" DIA. HOLE	20	PC
1	1/2" DIA. HOLE	21	PC
1	1/2" DIA. HOLE	22	PC
1	1/2" DIA. HOLE	23	PC
1	1/2" DIA. HOLE	24	PC
1	1/2" DIA. HOLE	25	PC
1	1/2" DIA. HOLE	26	PC
1	1/2" DIA. HOLE	27	PC
1	1/2" DIA. HOLE	28	PC
1	1/2" DIA. HOLE	29	PC
1	1/2" DIA. HOLE	30	PC
1	1/2" DIA. HOLE	31	PC
1	1/2" DIA. HOLE	32	PC
1	1/2" DIA. HOLE	33	PC
1	1/2" DIA. HOLE	34	PC
1	1/2" DIA. HOLE	35	PC
1	1/2" DIA. HOLE	36	PC
1	1/2" DIA. HOLE	37	PC
1	1/2" DIA. HOLE	38	PC
1	1/2" DIA. HOLE	39	PC
1	1/2" DIA. HOLE	40	PC
1	1/2" DIA. HOLE	41	PC
1	1/2" DIA. HOLE	42	PC
1	1/2" DIA. HOLE	43	PC
1	1/2" DIA. HOLE	44	PC
1	1/2" DIA. HOLE	45	PC
1	1/2" DIA. HOLE	46	PC
1	1/2" DIA. HOLE	47	PC
1	1/2" DIA. HOLE	48	PC
1	1/2" DIA. HOLE	49	PC
1	1/2" DIA. HOLE	50	PC
1	1/2" DIA. HOLE	51	PC
1	1/2" DIA. HOLE	52	PC
1	1/2" DIA. HOLE	53	PC
1	1/2" DIA. HOLE	54	PC
1	1/2" DIA. HOLE	55	PC
1	1/2" DIA. HOLE	56	PC
1	1/2" DIA. HOLE	57	PC
1	1/2" DIA. HOLE	58	PC
1	1/2" DIA. HOLE	59	PC
1	1/2" DIA. HOLE	60	PC

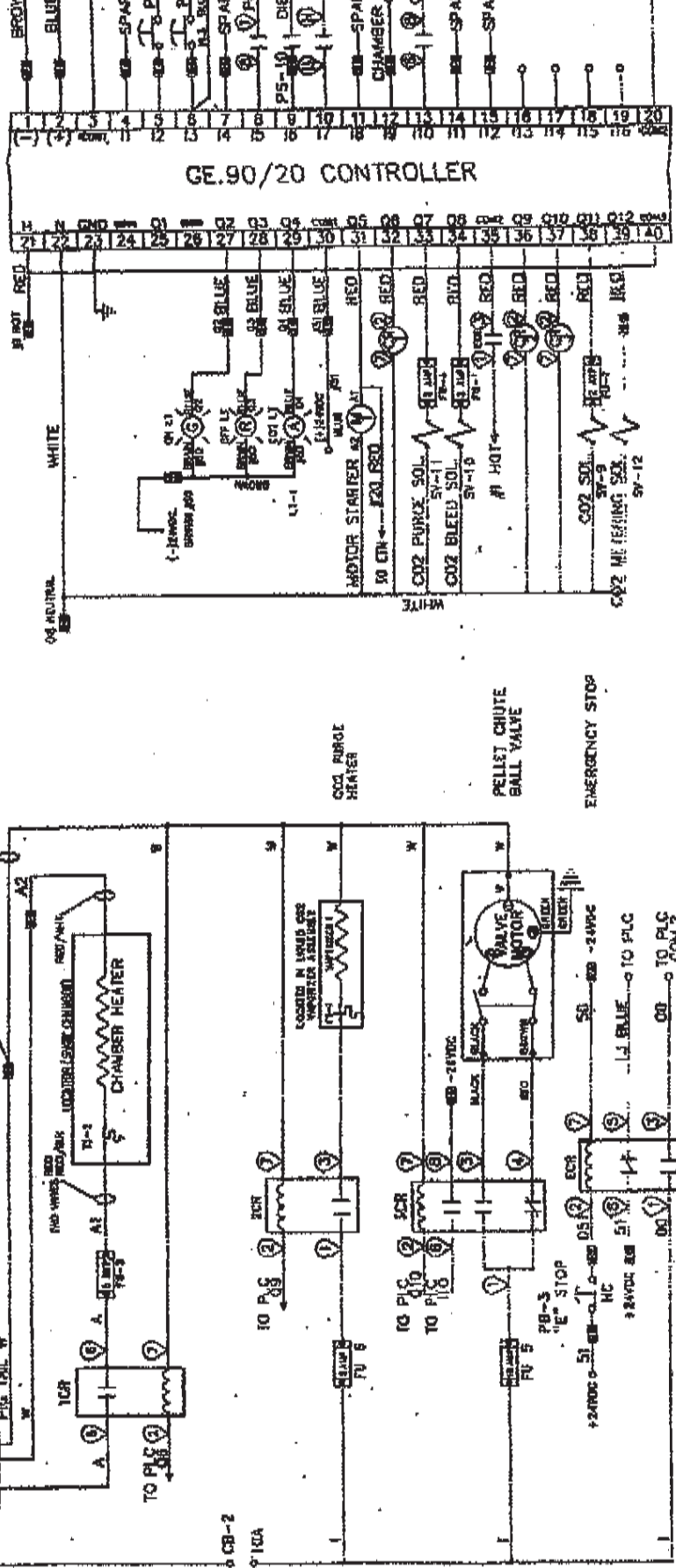
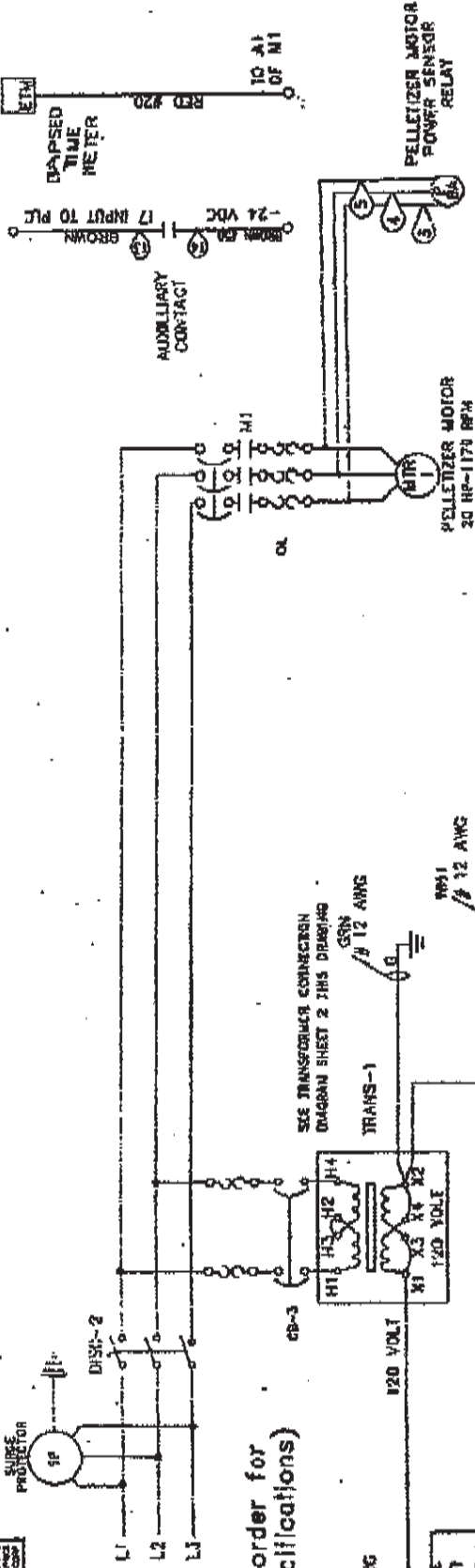
QTY	DESCRIPTION	REF. NO.	UNIT
1	1/2" DIA. HOLE	1	PC
1	1/2" DIA. HOLE	2	PC
1	1/2" DIA. HOLE	3	PC
1	1/2" DIA. HOLE	4	PC
1	1/2" DIA. HOLE	5	PC
1	1/2" DIA. HOLE	6	PC
1	1/2" DIA. HOLE	7	PC
1	1/2" DIA. HOLE	8	PC
1	1/2" DIA. HOLE	9	PC
1	1/2" DIA. HOLE	10	PC
1	1/2" DIA. HOLE	11	PC
1	1/2" DIA. HOLE	12	PC
1	1/2" DIA. HOLE	13	PC
1	1/2" DIA. HOLE	14	PC
1	1/2" DIA. HOLE	15	PC
1	1/2" DIA. HOLE	16	PC
1	1/2" DIA. HOLE	17	PC
1	1/2" DIA. HOLE	18	PC
1	1/2" DIA. HOLE	19	PC
1	1/2" DIA. HOLE	20	PC
1	1/2" DIA. HOLE	21	PC
1	1/2" DIA. HOLE	22	PC
1	1/2" DIA. HOLE	23	PC
1	1/2" DIA. HOLE	24	PC
1	1/2" DIA. HOLE	25	PC
1	1/2" DIA. HOLE	26	PC
1	1/2" DIA. HOLE	27	PC
1	1/2" DIA. HOLE	28	PC
1	1/2" DIA. HOLE	29	PC
1	1/2" DIA. HOLE	30	PC
1	1/2" DIA. HOLE	31	PC
1	1/2" DIA. HOLE	32	PC
1	1/2" DIA. HOLE	33	PC
1	1/2" DIA. HOLE	34	PC
1	1/2" DIA. HOLE	35	PC
1	1/2" DIA. HOLE	36	PC
1	1/2" DIA. HOLE	37	PC
1	1/2" DIA. HOLE	38	PC
1	1/2" DIA. HOLE	39	PC
1	1/2" DIA. HOLE	40	PC
1	1/2" DIA. HOLE	41	PC
1	1/2" DIA. HOLE	42	PC
1	1/2" DIA. HOLE	43	PC
1	1/2" DIA. HOLE	44	PC
1	1/2" DIA. HOLE	45	PC
1	1/2" DIA. HOLE	46	PC
1	1/2" DIA. HOLE	47	PC
1	1/2" DIA. HOLE	48	PC
1	1/2" DIA. HOLE	49	PC
1	1/2" DIA. HOLE	50	PC
1	1/2" DIA. HOLE	51	PC
1	1/2" DIA. HOLE	52	PC
1	1/2" DIA. HOLE	53	PC
1	1/2" DIA. HOLE	54	PC
1	1/2" DIA. HOLE	55	PC
1	1/2" DIA. HOLE	56	PC
1	1/2" DIA. HOLE	57	PC
1	1/2" DIA. HOLE	58	PC
1	1/2" DIA. HOLE	59	PC
1	1/2" DIA. HOLE	60	PC

PELLETIZER ASSEMBLY
 MODEL 349/3 DIE SIZES
 12280

CONST. CONNECTIONS SHOWN TO INDICATE HOW TO CONNECT TO THE MAINS SUPPLY. THE MAINS SUPPLY IS NOT SHOWN IN THIS DRAWING. THE MAINS SUPPLY IS NOT SHOWN IN THIS DRAWING.

CUSTOMER SUPPLY

(See work order for power specifications)



WIRE	NO.	DESCRIPTION
RED	1	11961
RED	2	12510
RED	3	USED ON

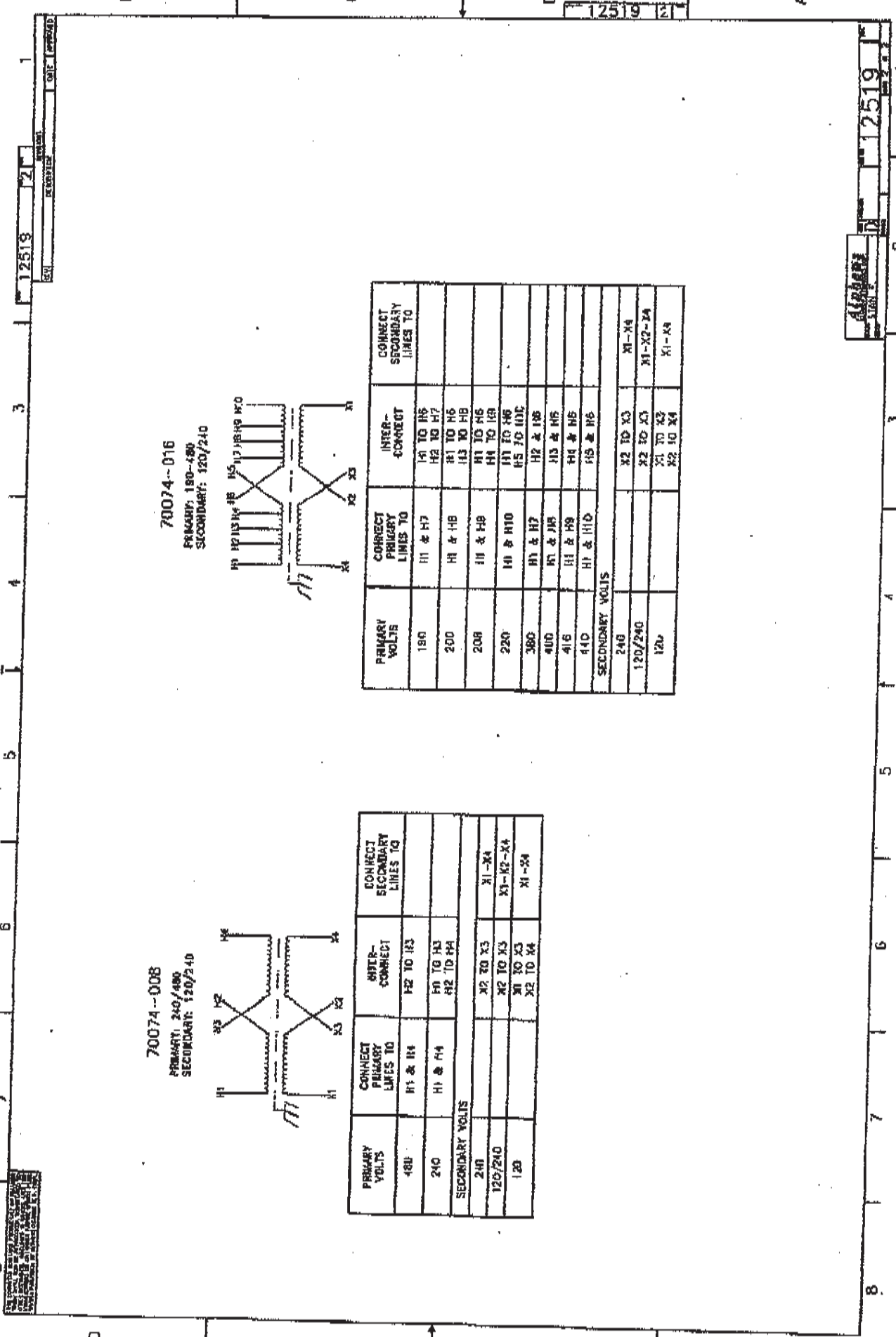
THIS JOB IS TO BE USED ONLY FOR THE 3 PHASE WIRE. IS NOT TO BE USED FOR THE 2 PHASE WIRE.

D

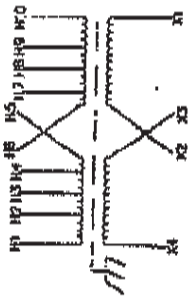
C

B

A

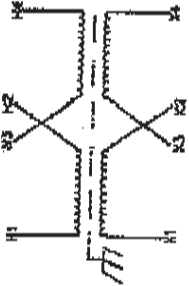


70074--016
 PRIMARY: 180/480
 SECONDARY: 120/240



PRIMARY VOLTS	CONNECT PRIMARY LINES TO	INTER-CONNECT	CONNECT SECONDARY LINES TO
180	H1 & H7	H1 TO H5 H2 TO H7	
200	H1 & H8	H1 TO H5 H3 TO H8	
200	H1 & H9	H1 TO H5 H4 TO H9	
220	H1 & H10	H1 TO H5 H5 TO H10	
380	H1 & H7	H2 & H8	
400	H1 & H8	H3 & H5	
416	H1 & H9	H4 & H5	
440	H1 & H10	H5 & H6	
SECONDARY VOLTS			
240		X2 TO X3	X1-X4
120/240		X2 TO X3	X1-X2-X4
120		X1 TO X2 X2 TO X4	X1-X4

70074--008
 PRIMARY: 240/480
 SECONDARY: 120/240



PRIMARY VOLTS	CONNECT PRIMARY LINES TO	INTER-CONNECT	CONNECT SECONDARY LINES TO
480	H1 & H4	H2 TO H3	
240	H1 & H4	H1 TO H3 H2 TO H4	
SECONDARY VOLTS			
240		X2 TO X3	X1-X4
120/240		X2 TO X3	X1-X2-X4
120		X1 TO X3 X2 TO X4	X1-X4

